



MONTHLY MEMBERSHIP PROGRESS REPORT

District 23 B

Results as of: 06/30/2019

GMT: MAHESH CHITNIS

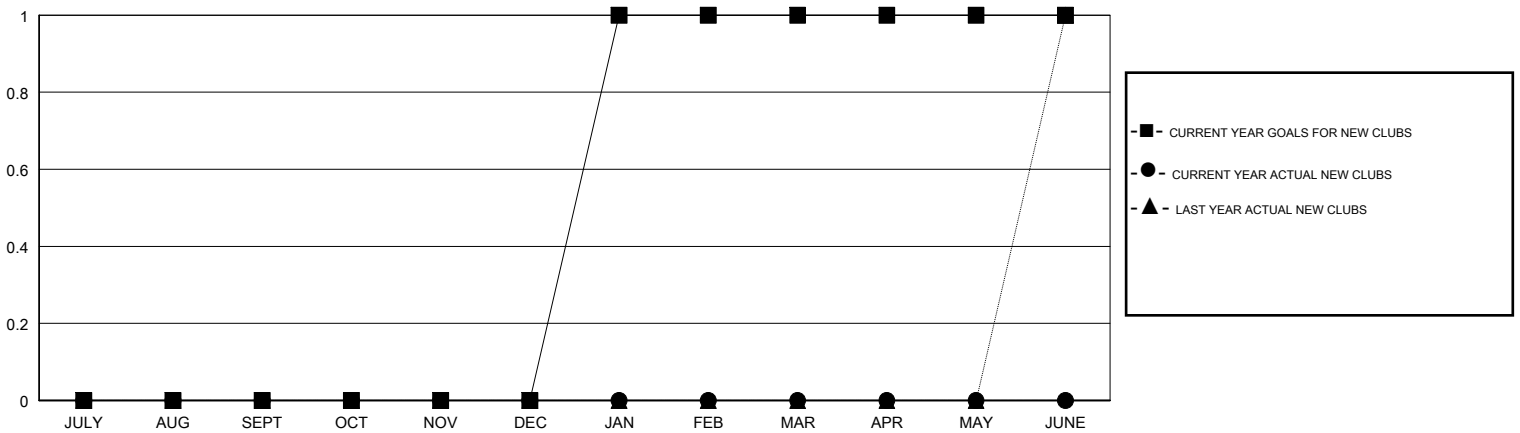
LOCATION CONNECTICUT

GMT CA

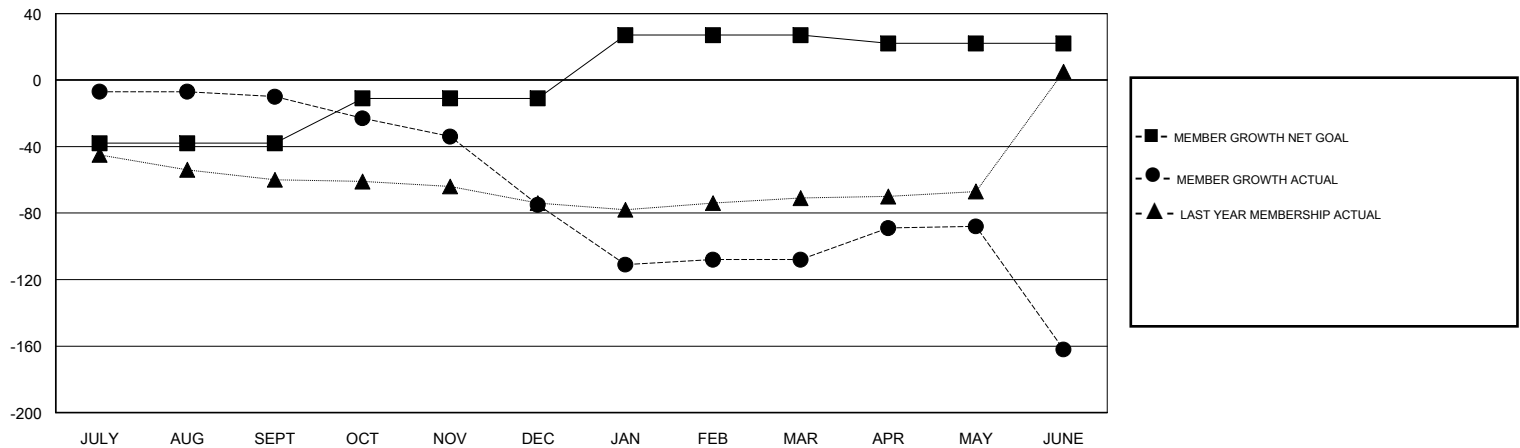
Clubs			
RESULTS FOR 2018-2019			
QUARTER	NEW CLUB GOAL	NEW CLUBS	DROPPED CLUBS
JULY/AUG/SEPT	0	0	1
OCT/NOV/DEC	0	0	1
JAN/FEB/MAR	1	0	0
APR/MAY/JUNE	0	0	0

Members			
RESULTS FOR 2018-2019			
QUARTER	MEMBER GROWTH NET GOAL	MEMBER GROWTH ACTUAL	DROPPED MEMBERS ACTUAL (including transfers)
JULY/AUG/SEPT	-38	28	36
OCT/NOV/DEC	27	32	96
JAN/FEB/MAR	38	32	64
APR/MAY/JUNE	-5	47	98

GOALS AND ACTUAL NEW CLUBS CUMULATIVE



GOALS AND ACTUAL MEMBERS CUMULATIVE



DROPPED CLUBS: 2	37 CLUBS OF 55 ADDED 1 OR MORE NEW MEMBERS	<u>GENDER DISTRIBUTION</u> MALE 1,142 (65.75%) FEMALE 595 (34.25%) Women Percentage Fiscal Year Goal: 35%
<u>DROPPED MEMBERS</u> DECEASED 17 CLUB CANCELLED 10 OTHER 267 TOTAL 294	CLICK HERE FOR CUMULATIVE MEMBERSHIP DATA	TOTAL FAMILY UNIT MEMBERS 328 FAMILY MEMBERS PAYING HALF DUES 169